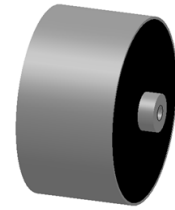


www.oneontatechnologies.com

High Irms Current DC Filter, DC-Link, Decoupling, Snubber

❖ General Description

Standard Reference	IEC 61071
Climatic Category	40 / 85 / 56
Max . Altitude	2000 m
Dielectric Material	Self-Healing Metallized Polypropylene
Case Type	Polyster tape, Resin filled, UL94V-0
Terminals Type	Male or Female screw terminals
Capacitance Range	Cn: 5μF ~ 2000μF (1kHz , 20°C)
Capacitance Tolerance	J (±5%), K(±10%)
Dielectric Dissipation Factor	tg δ ₀ : 0.0002 (1kHz , 20°C)
Insulation Resistance	IR × Cn : ≥10000s (100Vdc, 60s, 20°C)
Rated Voltage	Un : 300VDC ~ 5000VDC
Test voltage U _{TR}	U _{TR} : 1.5Un (10s , 20°C) –Test voltage between both terminals
Test voltage U _{TC}	U _{TC} : 4000Vac (10s , 20°C) –Test voltage between terminals with case
	1.1 × Un : 30% of on-load duration
	1.15 × Un : 30 min/day
Maximum Over Voltage	1.2 × Un : 5 min/day
	1.3 × Un : 1 min/day
	1.5 × Un : 30 ms/time, 1000 times during the life of the capacitor
Operating Temperature	-40°C ~ +105°C (θ _{hs} ≤ 105°C)
	50% linear voltage derating from θ _{hs} 85°C to 105°C
Storage Temperature	-40°C ~ +105°C
Lifetime Expectancy	100,000 hours (1.0Un , θ _{hs} ≤ 70°C)
Max. Torque of terminals	M6 Female screw: 4.5 Nm , M8 Female screw: 5.0 Nm
Failure Rate Expectancy	≤ 100 FIT (1.0Un , θ _{hs} ≤ 70°C)
Installation	Any Position
Applications	EV/HEV Inverter , Medical power inverter, Mortor driver
Remarks	RoHs Compliant on request. Add "R" to p/n.
	*Other capacitance, voltage and dimensions are available on request.



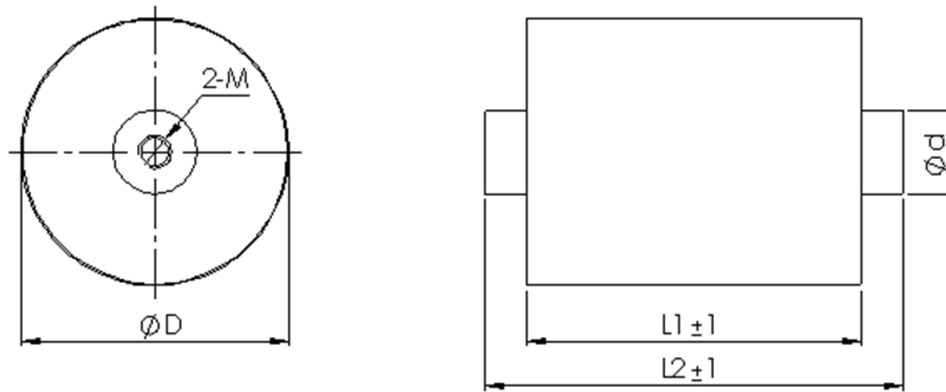
❖ Part Number System

EX: USM32-307K450B28

USM32	-	307	K	450	#	28
⋮		⋮	⋮	⋮	⋮	⋮
Series		Capacitance	Tolerance	Voltage	Style	L1
		307=300.0μF	J=±5%	VDC	A= M8 Male	Length
			K=±10%		B=M8 Female	

Style B: Female Screw (Output : M8×10mm)

Unit: mm



❖ Electrical Characteristics

Part Number	Cn	Un	ESL	ESR	Irms	dv/dt	I peak	Dimension (mm)				
	µF	Vdc	nH	mΩ	Max.	V/µs	Amps	ΦD	L1	L2	Φd	2-M
Un : 450VDC												
USM32-307K450B28	300	450	15	0.5	120	30	9000	125	28	40	22	M8
USM32-407K450B32	400	450	20	0.6	120	25	10000	125	32	44	22	M8
USM32-607K450B38	600	450	25	0.7	120	15	9000	125	38	50	22	M8
USM32-707K450B40	700	450	30	0.8	120	12	8400	125	40	52	22	M8
USM32-807K450B46	800	450	35	0.9	120	10	8000	125	46	58	22	M8
USM32-108K450B50	1000	450	40	1.0	120	8	8000	128	50	62	22	M8
Un : 600VDC												
USM32-187K600B28	180	600	15	0.6	100	36	6480	125	28	40	22	M8
USM32-257K600B32	250	600	20	0.7	100	28	7000	125	32	44	22	M8
USM32-307K600B38	300	600	25	0.8	100	22	6600	125	38	50	22	M8
USM32-407K600B40	400	600	30	0.9	100	18	7200	125	40	52	22	M8
USM32-507K600B46	500	600	35	1.0	100	13	6500	128	46	58	22	M8
USM32-607K600B50	600	600	40	1.1	100	10	6000	130	50	62	22	M8
Un : 800VDC												
USM32-107K800B28	100	800	15	0.6	80	50	5000	120	28	40	22	M8
USM32-157K800B32	150	800	20	0.7	90	38	5700	125	32	44	22	M8
USM32-207K800B38	200	800	25	0.8	90	25	5000	125	38	50	22	M8
USM32-257K800B40	250	800	30	0.9	90	20	5000	125	40	52	22	M8
USM32-307K800B46	300	800	35	1.0	90	15	4500	128	46	58	22	M8
USM32-357K800B50	350	800	40	1.1	90	12	4200	130	50	62	22	M8
Un : 1000VDC												
USM32-756K1000B28	75	1000	15	0.8	70	55	4125	125	28	40	22	M8
USM32-107K1000B32	100	1000	20	0.9	70	45	4500	125	32	44	22	M8
USM32-147K1000B38	140	1000	25	1.0	70	30	4200	125	38	50	22	M8
USM32-177K1000B40	170	1000	30	1.1	70	25	4250	125	40	52	22	M8
USM32-207K1000B46	200	1000	35	1.2	70	20	4000	125	46	58	22	M8
USM32-247K1000B50	240	1000	40	1.3	70	15	3600	125	50	62	22	M8

*Other capacitance , voltage and dimensions are available on request.

ΔVersion: 2016-1.0