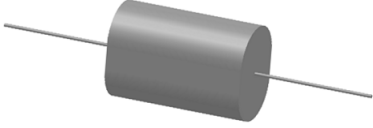


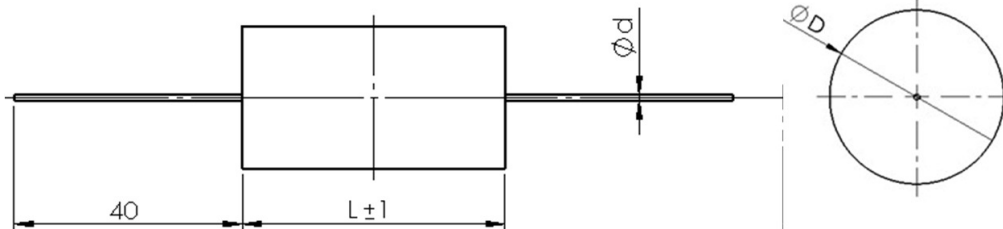
❖ **General Description**

Standard Reference	IEC 61071, IEC 60384-1	
Climatic Category	40 / 85 / 21	
Dielectric Material	Self-Healing Metallized Polypropylene	
Case Type	Polyester Tape, Resin filled, UL94V-0 , pvc tube on request	
Terminals Type	Tinned Copper wire and Male or Female screw	
Capacitance Range	Cn: 100pF ~ 200.0μF (1kHz , 20°C)	
Capacitance Tolerance	J (±5%), K(±10%), M(±20%)	
Dielectric Dissipation Factor	tg δo: 0.0002 (1kHz , 20°C)	
Insulation Resistance	IR × Cn : ≥10000s (100Vdc, 60s, 20°C)	
Rated Voltage	Un : 3KVDC ~ 200KVDC	
Test voltage UTT	UTT: 1.4Un (10s , 20°C) –Test voltage between both terminals	
Operating Temperature	- 40°C ~ +85°C , ϑhs ≤ 70°C	
Storage Temperature	- 40°C ~ +85°C	
Installation	Any Position	
Remarks	RoHs Compliant on request. Add "R" to p/n. *Other capacitance, voltage and dimensions are available on request.	

❖ **Outline Drawing**

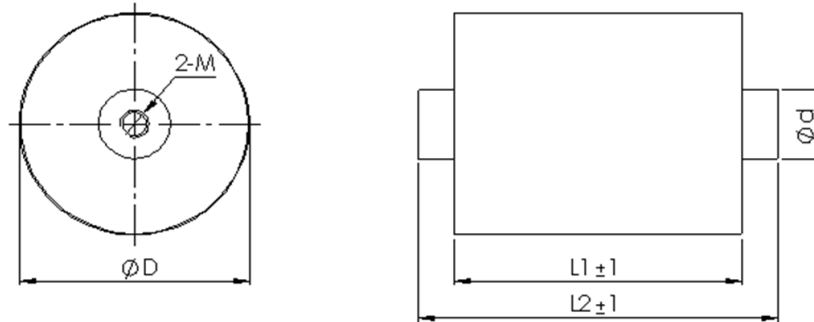
Unit: mm

Style A : Round , Tinned Copper Wire



Unit: mm

Style B : Round , M6 or M8 Female Screw (Max. Torque: 4.0Nm)



❖ **Electrical Characteristics**

USM21 Series

www.oneontatechnologies.com

Part Number	Cn	Un	U _{TR}	dv/dt	I Peak	Dimension (mm) (Style B: L2=L1+12mm)				
	μF	Vdc	Vdc	V/μs	Amps	Style	ΦD	L1	Φd	2-M
<i>Un 4000VDC</i>										
USM21-105J4000A78	1.0	4000	5600	700	700	A	42	78	1.2	--
USM21-106J4000B135	10	4000	5600	300	3000	B	102	135	22	M8×10
USM21-156J4000B135	15	4000	5600	300	4500	B	125	135	22	M8×10
<i>Un 8000VDC</i>										
USM21-103J8000A46	0.01	8000	11200	5000	50	A	17	46	1.0	--
USM21-104J8000A46	0.1	8000	11200	5000	500	A	54	46	1.2	--
USM21-205J8000B115	2.0	8000	11200	3000	6000	B	112	115	22	M8×10
<i>Un 10000VDC</i>										
USM21-103J10000A46	0.01	10000	14000	10000	100	A	18	46	1.0	--
USM21-104J10000B50	0.1	10000	14000	5500	550	B	55	50	15	M6×10
USM21-205J10000B115	2.0	10000	14000	3000	6000	B	120	115	22	M8×10
<i>Un 15000VDC</i>										
USM21-103J15000A72	0.01	15000	21000	12000	120	A	21	72	1.0	--
USM21-104J15000A118	0.1	15000	21000	3600	360	A	42	118	1.2	--
USM21-105J15000B168	1.0	15000	21000	1800	1800	B	105	168	22	M8×10
<i>Un 20000VDC</i>										
USM21-103J20000A105	0.01	20000	28000	15000	150	A	26	105	1.2	--
USM21-104J20000B150	0.1	20000	28000	5000	500	B	52	150	15	M6×10
USM21-105J20000B155	1.0	20000	28000	1500	1500	B	95	155	22	M8×10
<i>Un 30000VDC</i>										
USM21-103J30000A120	0.01	30000	42000	25000	250	A	30	120	1.2	--
USM21-104J30000B160	0.1	30000	42000	5000	500	B	56	160	15	M6×10
USM21-604J30000B160	0.6	30000	42000	3000	1800	B	128	160	22	M8×10
<i>Un 40000VDC</i>										
USM21-102J40000A135	0.001	40000	56000	10000	10	A	24	135	1.0	--
USM21-103J40000B135	0.01	40000	56000	10000	100	A	64	135	15	M6×10
USM21-303J40000B135	0.03	40000	56000	10000	300	B	102	135	22	M8×10

*Other capacitance, voltage and dimensions are available on request.

ΔVersion: 2016-1.0