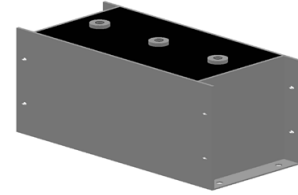


www.oneontatechnologies.com

Delta or Wye of Three Phase AC filter Capacitor With Rectangular Case

❖ General Description



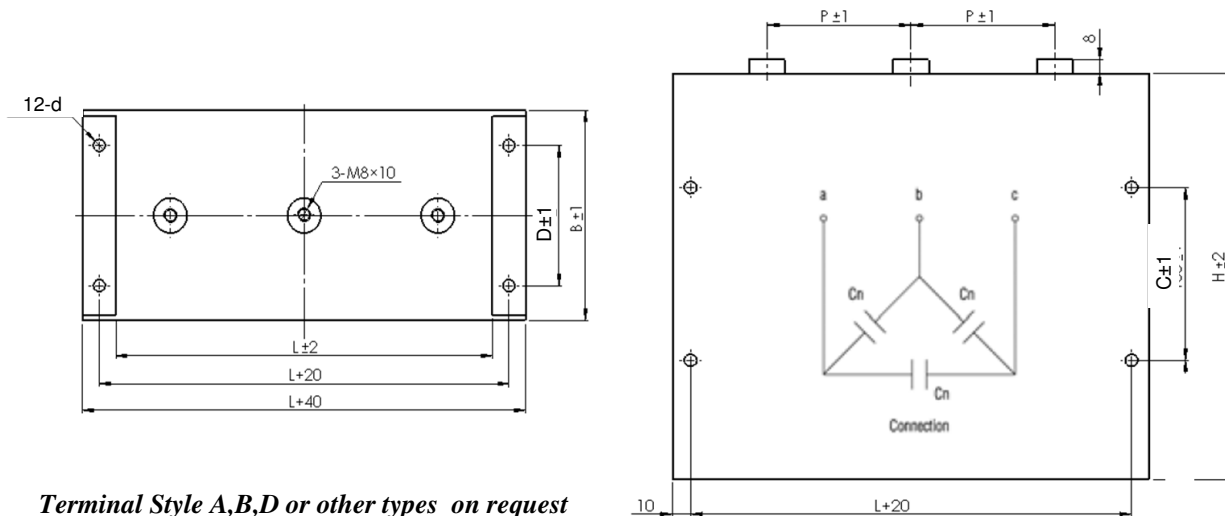
Standard Reference	IEC 61071
Climatic Category	40 / 85 / 56
Max . Altitude	2000 m
Dielectric Material	Self-Healing Metallized Polypropylene
Case Type	Aluminum ,Plastic or Stainless Steel Case, Resin filled
Terminals Type	Male , Female screw or Flat Copper
Capacitance Range	Cn: 3×10μF ~ 3×500μF
Capacitance Tolerance	J (±5%), K(±10%)
Dielectric Dissipation Factor	Dielectric Dissipation Factor (tg δ ₀): 0.0002 (1kHz , 20°C)
Insulation Resistance	IR × Cn : ≥ 10000s (100Vdc, 60s, 20°C)
Rated Voltage	Urms : 300VAC ~ 5000VAC
Test voltage UTT	UTT: 1.5Urms (10s , 20°C) –Test voltage between both terminals
Test voltage UTC	UTC: 3k~6kVAc (10s , 20°C) –Test voltage between terminals with case
	1.1 × Un : 30% of on-load duration
	1.15 × Un : 30 min/day
Maximum Over Voltage	1.2 × Un : 5 min/day
	1.3 × Un : 1 min/day
	1.5 × Un : 30 ms/time, 1000 times during the life of the capacitor
Operating Temperature	-40°C ~ +85°C; Øhs ≤ 85°C, 1.0Un
Storage Temperature	-40°C ~ +85°C
Lifetime Expectancy	30,000 hours (1.0Urms , Øhs ≤ 70°C)
Max. Torque of terminals	M6 Female:6.5 Nm, M8 Female:8.5 Nm , M12 Male screw: 10 Nm
Applications	Wind/Solar Inverter , SVG ,APF, High frequency power supply
Remarks	RoHs Compliant on request. Add "R" to p/n. *Other capacitance, voltage and dimensions are available on request

❖ Part Number System

EX: USM51-137J500B170SD

USM51	-	137	J	500	#	170	#	D
⋮		⋮	⋮	⋮	⋮	⋮	⋮	⋮
Series	Capacitance	Tolerance	Voltage	Terminal Style	Height	Case Type	Connection	
	106=10.0μF	J=±5%	Urms	A= M12 Male	H	S=Stainless steel	D=Delta	
	107=100.0μF	K=±10%	VAC	B=M8 Female		A=Aluminum	W=Wye	
						P=Plastic		

Terminal Style B : 3-M8 Female Screw (Delta Connection)



Terminal Style A,B,D or other types on request

Case No.	L	B	H	C	D	12-d	P
A1	225	120	170	80	80	Φ7	80
A2	225	120	235	100	80	Φ7	80

❖ Electrical Characteristics

Part Number	Cn	Urms	UTC	ESL	ESR	Irms	dv/dt	I peak	Dimension (mm)		
	μF	Vac	Vac	nH	mΩ	A	V/μs	Amps	L	B	H
Urms : 500VAC, U _{TT} : 750VAC or 1075VDC , Delta Connection											
USM51-137J500B170#D	3×130	500	4000	80	2.5	50	30	3900	225	120	170
USM51-207J500B235#D	3×200	500	4000	100	1.8	70	30	6000	225	120	235
Urms : 690VAC, U _{TT} : 1035VAC or 1500VDC , Delta Connection											
USM51-506J690B170#D	3×50	690	4000	80	2.0	45	50	2500	225	120	170
USM51-756J690B235#D	3×75	690	4000	100	1.5	65	50	3750	225	120	235
Urms : 850VAC, U _{TT} : 1275VAC or 1850VDC , Delta Connection											
USM51-356J850B170#D	3×35	850	4000	80	2.3	35	60	2100	225	120	170
USM51-506J850B235#D	3×50	850	4000	100	1.4	55	60	3000	225	120	235
Urms : 1000VAC, U _{TT} : 1500VAC or 2200VDC , Delta Connection											
USM51-256J1000B170#D	3×25	1000	4000	80	2.5	25	70	1750	225	120	170
USM51-406J1000B235#D	3×40	1000	4000	100	1.6	45	70	2800	225	120	235
Urms : 1200VAC, U _{TT} : 1800VAC or 2600VDC , Delta Connection											
USM51-206J1200B170#D	3×20	1200	4000	80	3.0	20	80	1600	225	120	170
USM51-306J1200B235#D	3×30	1200	4000	100	2.0	35	80	2400	225	120	235
Urms : 1500VAC, U _{TT} : 2250VAC or 3300VDC , Delta Connection											
USM51-126J1500B170#D	3×12	1500	4000	80	3.5	18	100	1200	225	120	170
USM51-206J1500B235#D	3×20	1500	4000	100	2.2	28	100	2000	225	120	235

*Other capacitance , voltage and dimensions are available on request.

ΔVersion: 2016-1.0